

FORTRAΔ

Migrating Off Control-M:

How to Plan and Prepare
for a Successful Migration
to JAMS





Table of Contents

The Demands on IT Professionals Today	3
Where the Control-M Migration Journey Begins	3
6 Reasons to Choose JAMS Over BMC Control-M	4
Companies That Have Made the Switch	4
Do's and Don'ts of Re-Examining Your Automation	5
6 Steps to a Successful Control-M Migration	6
3 Levels of Control-M Migration	7
Control-M Migration Case Study	8
4 Must-Knows Before You Begin Your Control-M Migrati	9
Start Your Control-M Migration Today	10



It's Time To Break Free From BMC Control-M & Make The Switch To JAMS

Learn how to modernize your automation environment, simplify the complexity of scheduling, and scale your business for growth.

The Demands On IT Professionals Today Continue To Grow

As IT teams find themselves struggling to keep up with the complexity of their automation environments, they must continue searching for more integrated, streamlined, and cost-effective solutions that scale with their business. Organizations need to leverage flexible and straightforward solutions for job scheduling and workload automation that empower them to break free of complicated and costly BMC Control-M products and licenses.

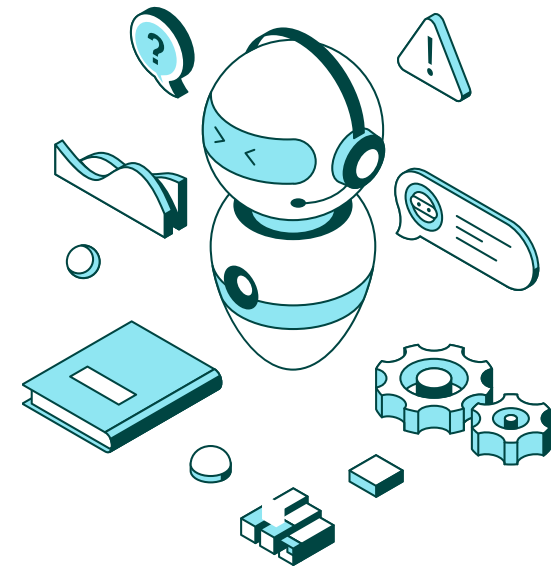
Many companies have realized the limitations of Control-M, including its outdated approach to scheduling that interrupts operations and requires IT teams to build out scheduling manually—increasing complexity and overall cost to the organization. But they may be unsure of how and where to start their Control-M conversion journey.

Where The Control-M Migration Journey Begins

With so many essential business operations at stake, it may seem overwhelming to move from one solution to another. Your past experiences with BMC Control-M probably make you think there is significant time, cost, and services required to move to a new solution. **But migrating from Control-M to JAMS is easier, more common, and more predictable** than you might think. No long consulting gigs here. Just a streamlined, straightforward plan to get

you where you need to go.

It's time you gain confidence to move away from the rigidity and complexity of BMC Control-M to improve, retool, streamline, augment, and elegantly design your automation. **Find out why so many companies just like yours have made the switch.**





6 Reasons To Choose JAMS Over Autosys Workload Automation



#1: Rapid Migration and Onboarding

Make the transition to JAMS quickly and efficiently. Proven services and utilities make it easy to regain control of your existing jobs defined in BMC Control-M, migrate them, and start seeing an immediate return on investment.



#2: Reduced Maintenance Costs

Reduce maintenance costs with easy-to-understand licensing options that are aligned with the batch jobs you need to run and the business applications you need to automate.



#3: Simplified Administration

Reduce reliance on single-product specialists and make powerful workload automation accessible—and manageable—for your entire IT team.



#4: All the Right Features

Breathe new life into critical business processes with a complete set of tools right out of the box—job monitoring, alerting, workflow design, auditing, and reporting.



#5: Modernized Approach

Maintaining an outdated version of Control-M may actually cost more over the short-and long-term. Ensure you are keeping up with the changing IT landscape and modernizing your approach.



#6: Cloud Requirements & Support

As organizations move to cloud and hybrid environments, cloud support should be clearly defined. Make sure cloud readiness is part of your vendor support strategy as it is with JAMS.

You're In Good Company When You Make The Switch From BMC Control-M To JAMS.



SEE WHAT OTHER COMPANIES ARE SAYING

Discover why IT professionals at leading companies are switching to a better solution. Read G2 reviews to learn why **JAMS is rated a Leader**.
[Read More Reviews](#)

Do's & Don'ts Of Re-Examining Your Automation

#1: Don't Start Your Evaluation Process Too Late

Evaluating new solutions takes time. So if you delay evaluating new providers, you may not have enough time to switch comfortably. The sooner you start, the more time you'll have to make a good decision.

#2: Don't Fear Change

Putting off migrating automation solutions because you fear change can paralyze your business from moving forward and reduce efficiencies. Many companies that make the switch to JAMS indicate they wish they had done so sooner, just like the Mid-Market Utility we recently migrated off Control-M.

#3: Do Relook at Your Automation

A lot has changed in your business since you implemented BMC. You've scaled out, big time. You've had new regulatory requirements imposed that you may want on your scheduler. Has BMC kept up? It's time to re-evaluate and take a fresh look at your automation. Remember, your work now should drive overall strategy, not comfort or complacency.

Having all of our processes scheduled from JAMS provides a framework to easily control, deploy, and extend our existing system fleet. Although the most significant impact was reducing our license cost from BMC Control-M and ultimately increasing our company's EBITDA.

- Mid-Market Utility



6 Steps To A Successful Control-M Migration

What does it take to make the transition to the world-class JAMS solution? The switch away from Control-M can be categorized in six high-level steps. With expertise and experience helping leading organizations make the conversion effortlessly, our promise is to guide you each step of the way.



STEP 1: Define Conversion Scope

Identify and clearly define project scale.



STEP 2: Evaluate & Analyze Resources

Outline change process and identify available resources.



STEP 3: Design Migration & Testing

Plan extraction and test implementation with specific migration criteria.



STEP 4: Transition & Implementation

Implement and finalize job definitions and workload transitions.



STEP 5: Certification & Validation

All defined and transitioned jobs and schedules are certified and ready for execution.



STEP 6: Execution & Go-Live




Control-M solution is replaced by JAMS solution with seamless transition.



3 Levels Of Control-M Migration

One of our primary goals is to minimize the impact on your business and effectively migrate your solution quickly and effortlessly. Using our conversion technologies, we can **easily and accurately convert anywhere from a handful of jobs** to thousands of jobs in JAMS. This process is completed in days—even when thousands of batch jobs are involved.

We offer conversion utilities that make it easy for organizations to migrate batch processes and workflows out of their existing system and into JAMS, the leading cross-platform job scheduling and batch processing system. We use a proven, repeatable methodology to convert scheduling processes into JAMS and help you **itemize and prioritize the scheduling features you actually use**. Here is how we categorize the three Levels of Control-M Migration, depending on the number of jobs you have.

	 Implementation Level 1	 Base Migration Level 2	 Advanced Migration Level 3
Training	JAMS Certification for Admins, Operators, Developers (40 hours)	JAMS Certification for Admins, Operators, Developers (40 hours)	JAMS Certification for Admins, Operators, Developers (40 hours)
Implementation	Scheduler	Scheduler & Agents	Scheduler, Agents, HA
Job Source		Migration & Functional Testing	Migration & Functional Testing
Credentials		Migration & Functional Testing	Migration & Functional Testing
Parameters & Variables		Migration & Functional Testing	Migration & Functional Testing
Dependencies			Migration & Configuration
Workflows			Migration & Configuration
Schedules			Migration & Configuration
Calendars			Migration & Configuration

See How Seminole Electric Went From Troubleshooting With Control-M To Maximizing Productivity With JAMS

Seminole's transition from mainframe processing to distributed processing presented the electric cooperative's IT team with an important choice. Continue to invest in Control-M, the cooperative's original mainframe scheduling tool, or start to look at alternative solutions. The idea of continuing with a legacy scheduler was cost prohibitive and the platform was poorly aligned with automation cycles demanded by the core business.

JAMS provided the powerful scheduling and automation features Seminole needed to realize the value of its distributed computing environment.

The centralized solution matched the trajectory of its business processes—from predominately time-based scheduling to eventbased scheduling. Seminole easily migrated its nearly 200 Control-M jobs into JAMS. The cooperative now runs 2,000 jobs a day in JAMS and manages between 200 and 300 total job definitions.

[Read the Full Case Study](#)



4 Must-Knows Before You Begin Your Control-M Conversion



You are never locked into a specific scheduler or workload automation solution. Even legacy applications that use lots of proprietary code can be unraveled. Finalize job definitions and workload transitions.



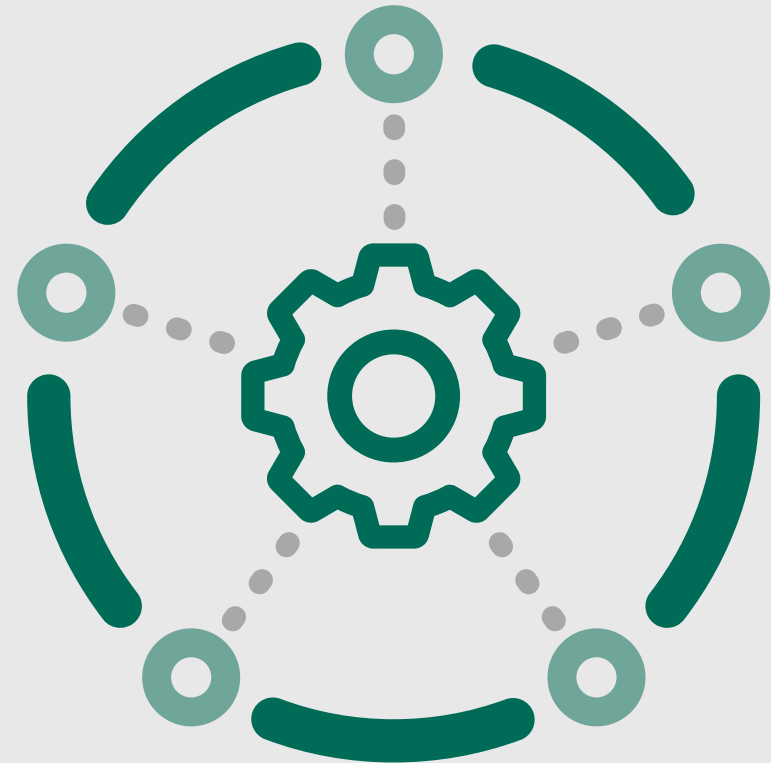
Choose a vendor that has conversion utilities. Even if the vendor does not have your specific version of legacy application, a good stable of utilities shows that they can map the most important elements of your jobs and schedule.



Understand how you're scheduling now. Are you only using the native features of your legacy scheduler or have you implemented workarounds and bolt-on utilities to make it work for your business?



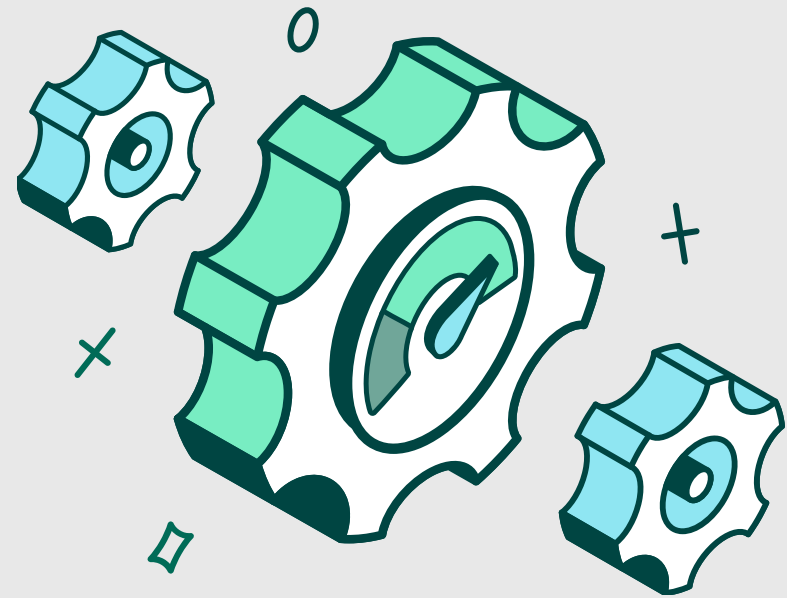
It's not just about the number of jobs. Simple command line jobs can be converted collectively, whereas jobs that include a large number of dependencies may take additional time.



Start Your Control-M Migration Today

It may seem like a hassle moving away from Control-M. You had obviously invested a significant amount of time and effort implementing the solution in the past. But now that you are considering migrating, you need to be certain the **conversion will be seamless and that your solution will be modernized.**

As you begin this journey, you can be sure that **JAMS has the know-how and experience to streamline your Control-M migration.** We offer comprehensive solutions and services to assist you—making your migration to JAMS painless. Best of all, your organization will have significantly reduced its job scheduling maintenance costs once you have converted to JAMS. Let us know how **we can help move you forward.**



FORTRA

About Fortra

Fortra is a cybersecurity company like no other. We're creating a simpler, stronger future for our customers. Our trusted experts and portfolio of integrated, scalable solutions bring balance and control to organizations around the world. We're the positive changemakers and your relentless ally to provide peace of mind through every step of your cybersecurity journey. Learn more at fortra.com.